

## Silva

### Assembly and Maintenance Instructions



Congratulations on your purchase of a Silva. The following instructions will guide you step-by-step through the assembly of your new bicycle. Proper assembly is essential in order to take full advantage of the product's potential and, more importantly, to ensure safe riding. Failure to do so could result in serious injury or death. Therefore, your bike must be assembled by a qualified bicycle mechanic. The assembly of your bike should follow the steps described in this document.

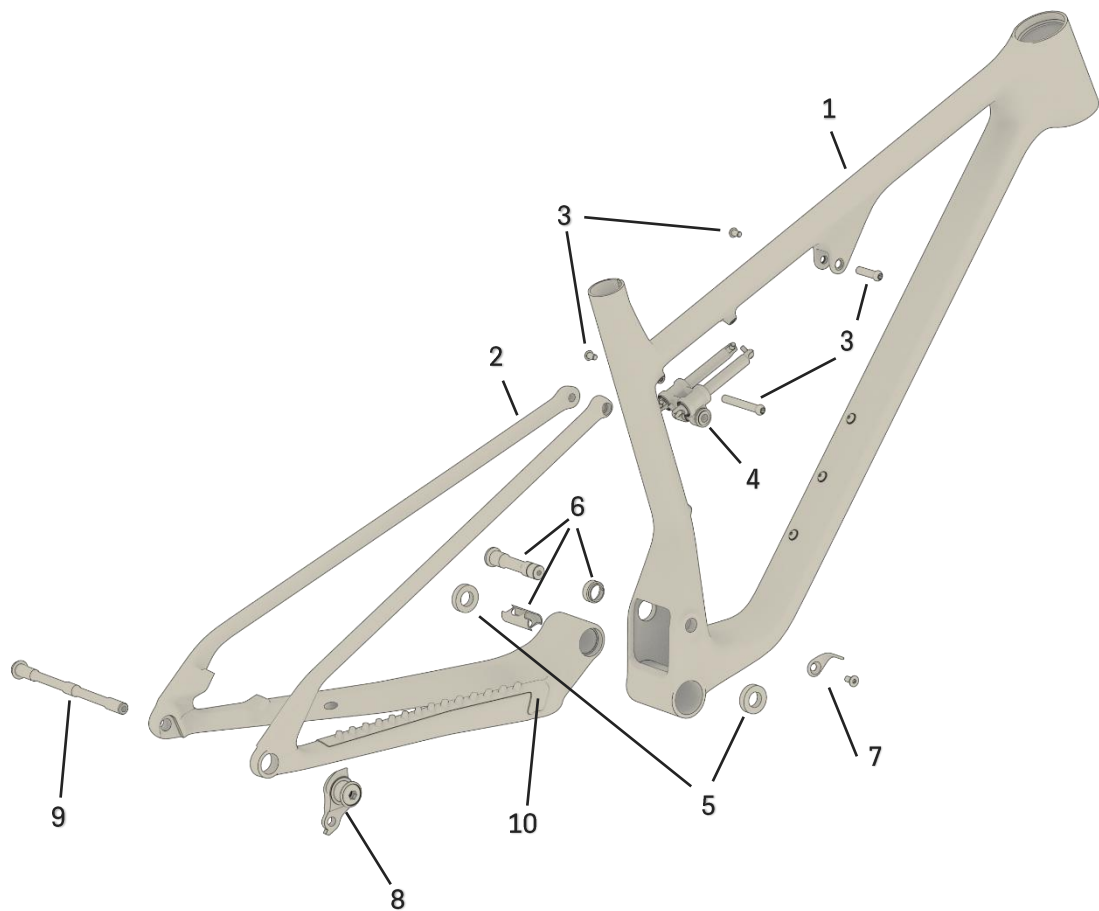
The Silva has been designed and tested for a maximum system weight (bike, rider, equipment and luggage) of 110 kg.

## Component Compatibility

Use only components that are compatible with the Silva. If in doubt, consult your Avona dealer.

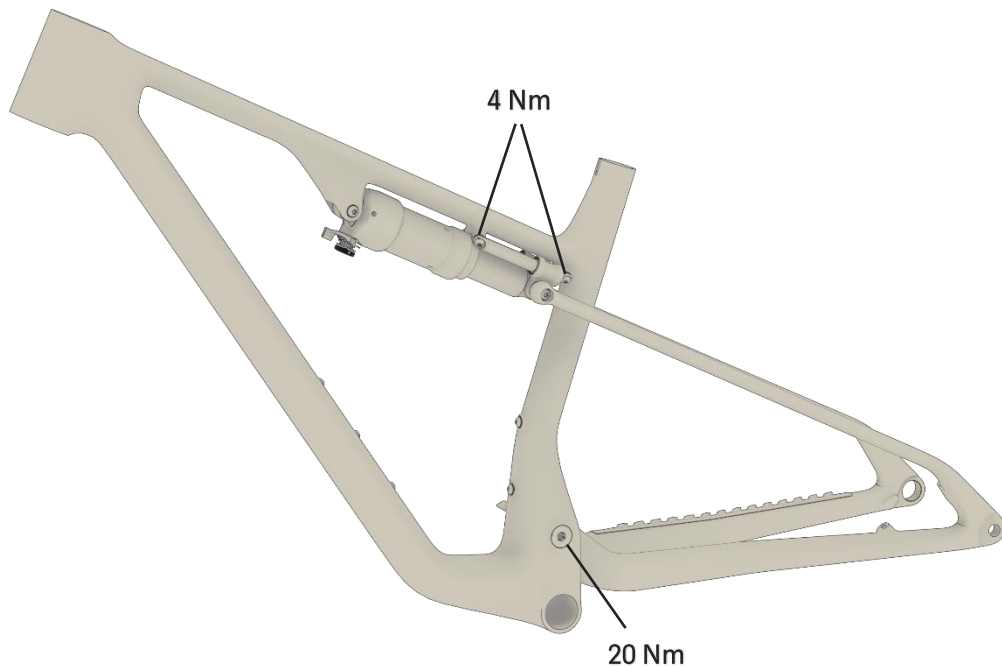
Crankset	38 T max with a 55 mm chainline
Rear Hub	12x148
Rear Brake	Postmount 180 mm
BB	BSA 73 mm
Rear Derailleur Hanger	UDH
Tires	Tires up to 29 x 2.4
Seatpost	Ø 31.6
Headset	IS52/IS52 with integrated cable routing, bearing seat depth 8.3 mm
Shifting	Electronic and mechanical shifting are both compatible
Bottles	2 x 550 ml or 1 x 750 ml
Shock	Eye-to-eye 210 mm, maximum stroke 55 mm

## Exploded View



Pos.	Article #	Description
1		Front Triangle
2		Swingarm
3		Shock Bolts
4		Slider Unit
5		Bearings 6902 Enduro Max
6		Main Pivot Axle Kit
7		Chainguide
8	29015	UDH
9	A6005	Faserwerk Thru Axle MTB
10		Chainstay Protection

## Torque Overview



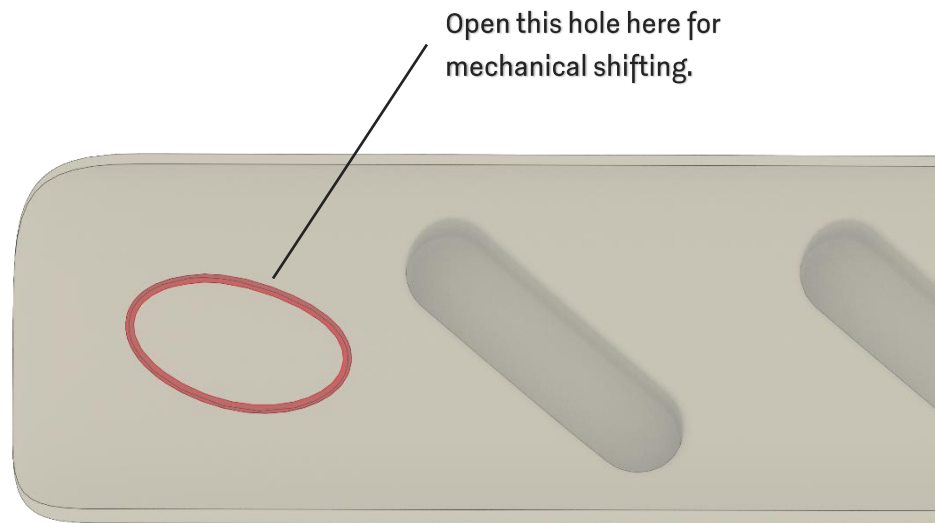
Unless otherwise noted, all bolts on the Silva frame should be tightened to 5 Nm, and Loctite 222 should be applied before reinstalling the bolts.

## Seatpost Installation

Unless you are using a repair stand that supports the frame at the axles, the seat post should be the first thing you install, as you should never clamp the frame. Use friction paste to the inside of the seat tube and outside of the seatpost to make sure your seatpost does not slip.

## Cable Routing

If you plan to build your Silva with mechanical shifting, you will need to open a hole in the chainstay protection to allow the cable housing to go through. There is a groove on the underside side of the chainstay protection that should make this an easy process.

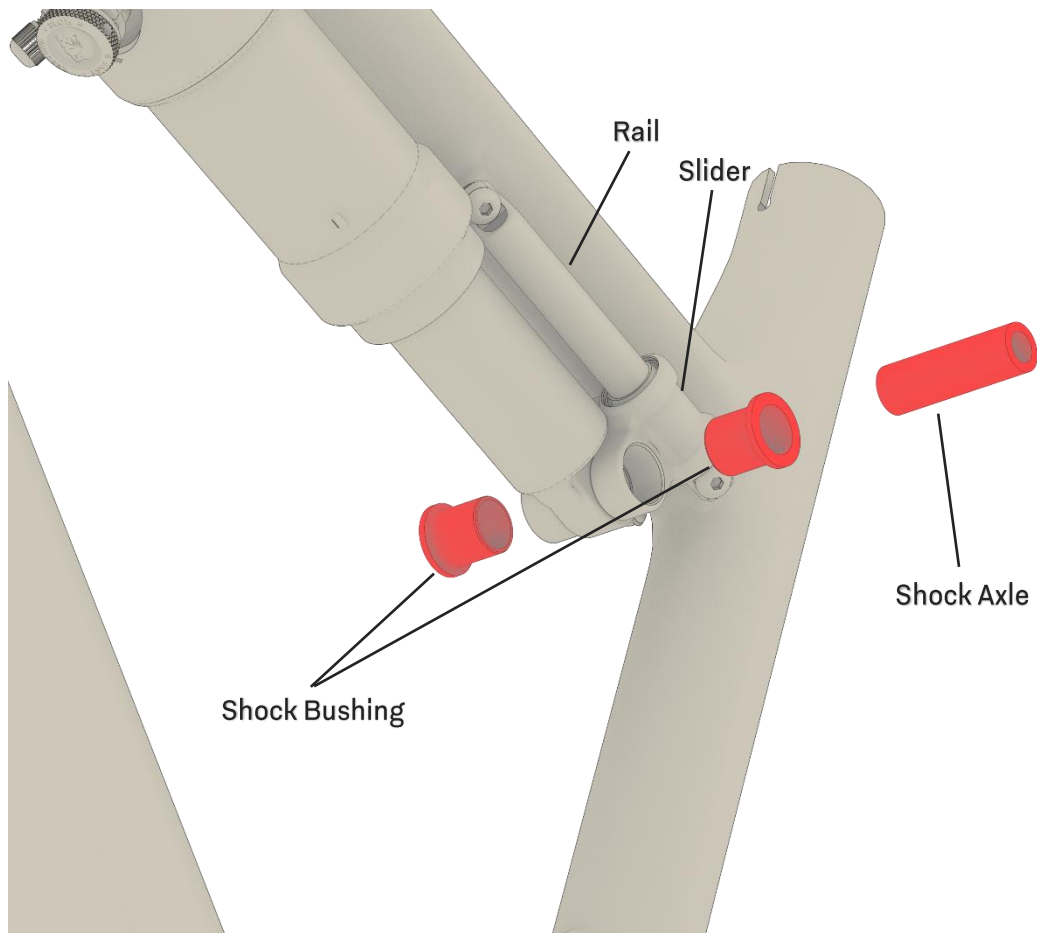


Start routing the cables at the rear of the bike, pushing the brake hose and derailleur cable housing (if applicable) toward the head tube. We recommend using a foam tube in the downtube to avoid rattling.

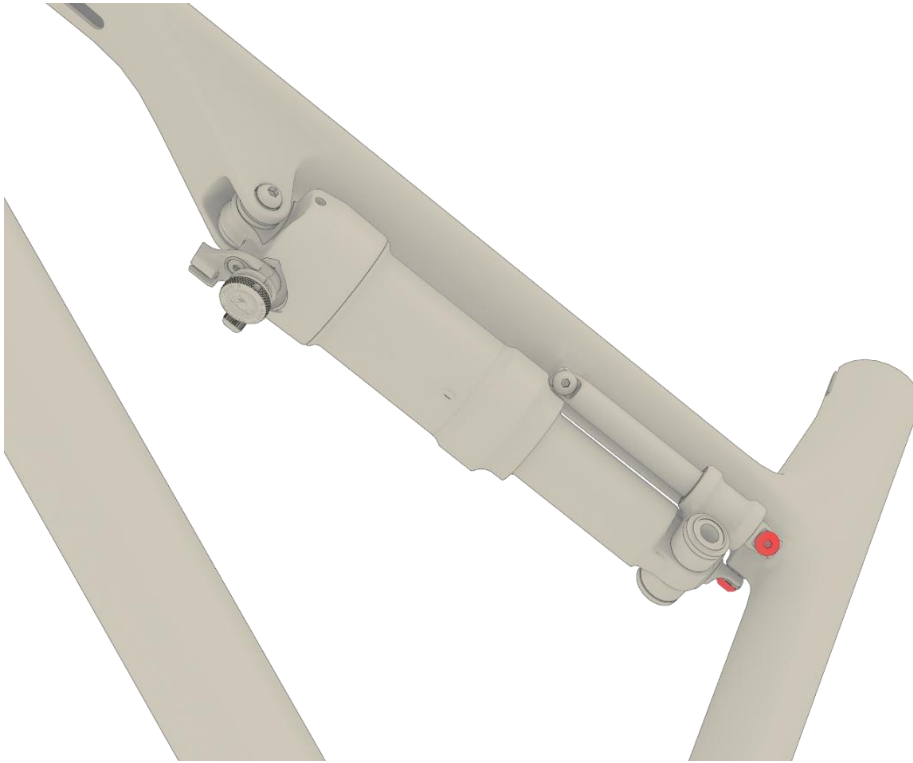
## Slider and Shock Installation

Proper alignment of the slider is critical to its function. The following procedure will ensure this.

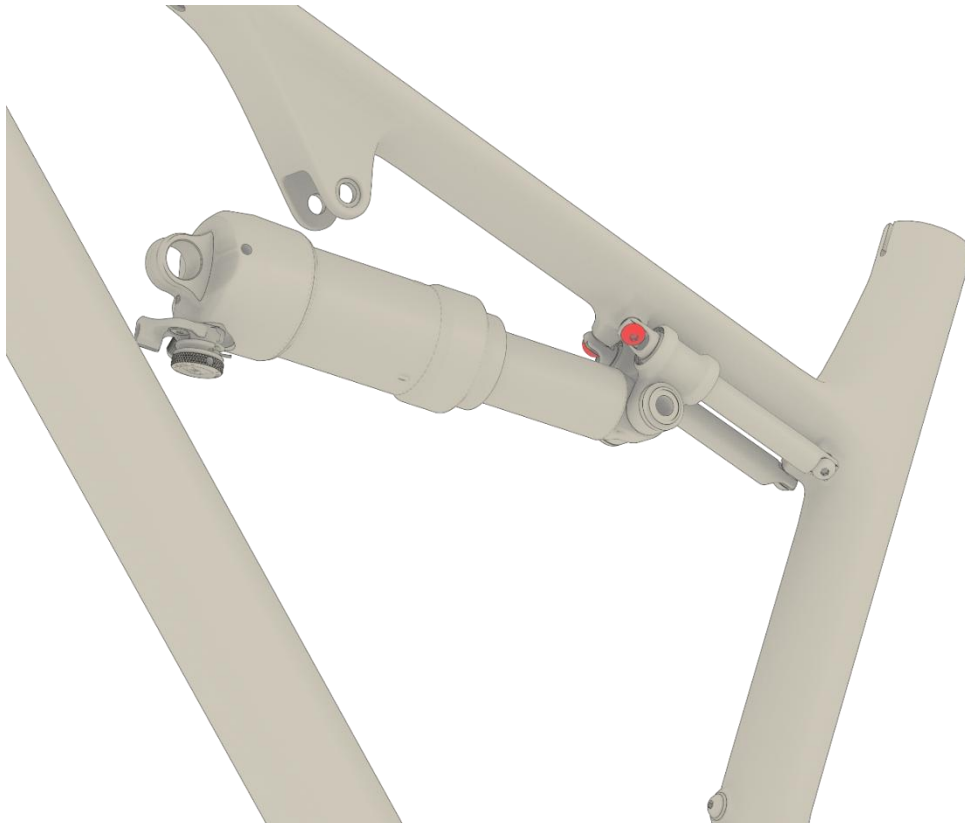
The first step is to assemble the shock to the slider by pushing in the shock bushings and inserting the shock axle.



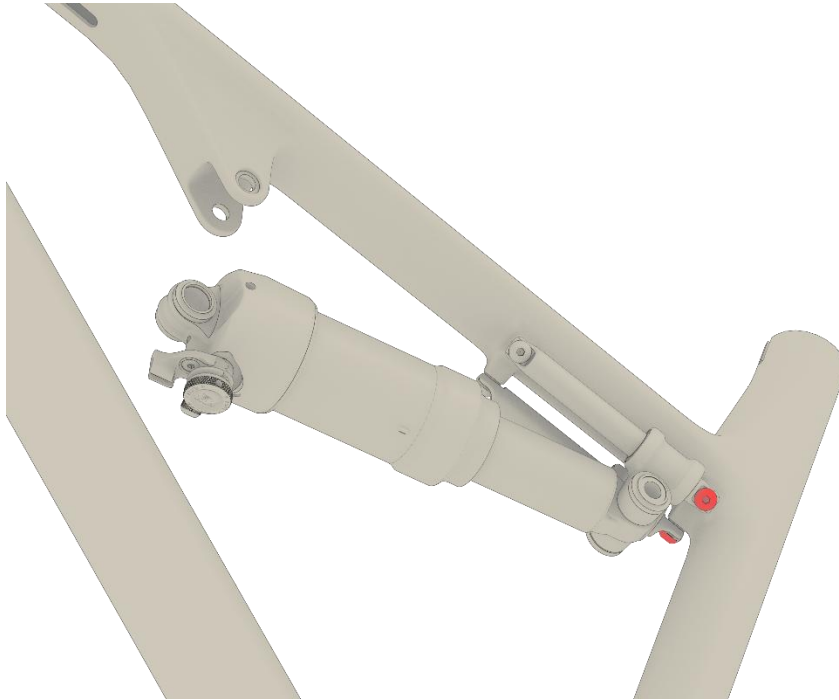
The next step is to mount the shock to the frame. Gently push the slider up against the mounting points on the top tube. Tighten the bolts that secure the rails to the frame just enough to hold them firmly against the frame, but not more.



Now, remove the front shock mount bolt and tilt the shock down. Loosen the two bolts at the front of the rails (marked in red below) and move the slider forwards. Tighten the front bolts to 4 Nm.

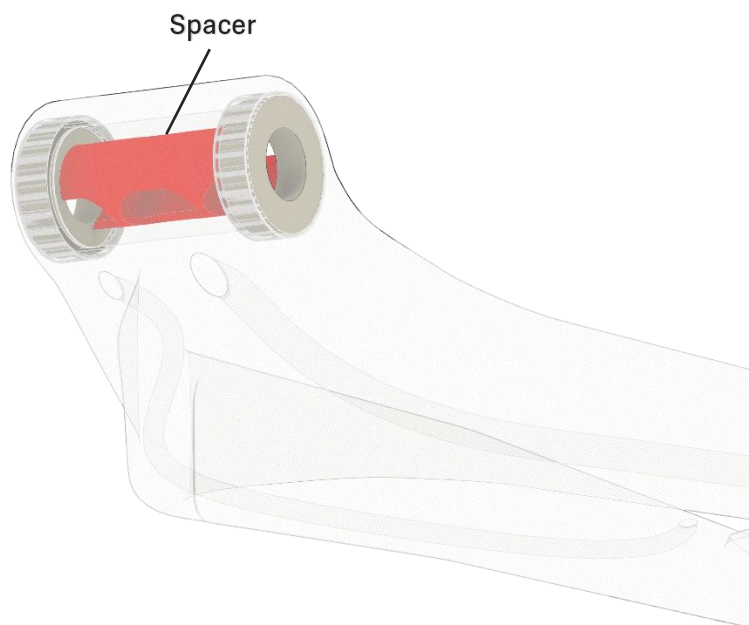


Move the slider all the way back, then tighten the two rear bolts to 4 Nm. Move the slider front to back a few times and check if it moves smoothly. If so, install the shock to the shock mount on the frame and tighten the bolt to 5 Nm. If not, loosen all 4 bolts holding the rails and repeat the process described above.



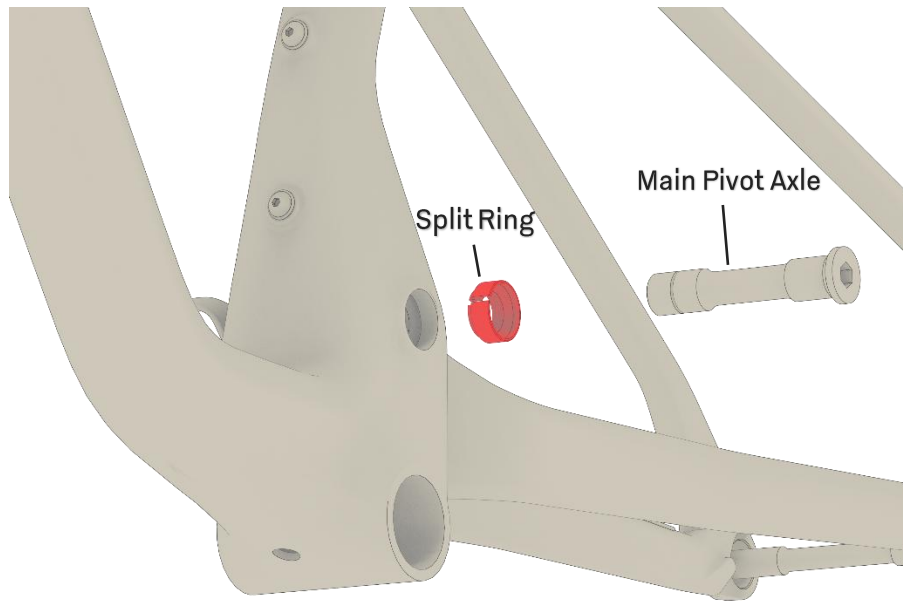
## Swingarm Assembly

There is a spacer between the two bearings of the swingarm. Make sure it is in place before installing the swingarm. If you need to replace the bearings, the spacer has cutouts for easy access to the bearing.

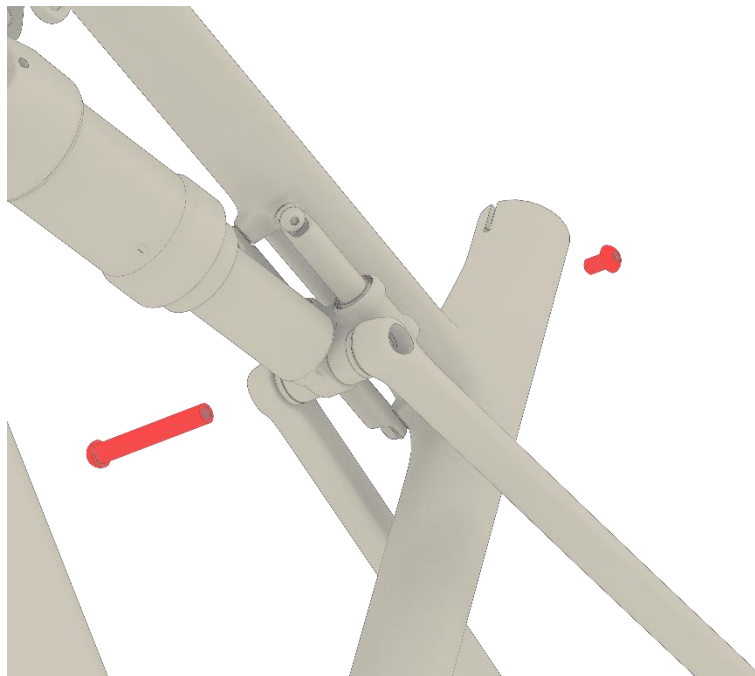




Grease the inside and outside of the main pivot split ring. Slide the swingarm into the front triangle, insert the split ring and the main pivot axle, and tighten the main pivot axle to 20 Nm.



To attach the seatstays to the slider, remove the shock from the shock mount and slide the slider approximately to the center of the rails, aligning the slider with the seatstay eyelet. Insert the shock bolt and tighten to 5 Nm.



## CeramicSpeed UFO Chain Maintenance

All Avona bikes come with a chain that went through CeramicSpeed's UFO chain wax treatment. This ensures your drivetrain stays clean, lasts longer and allows you to go faster. To continue enjoying these benefits, use only wax-based products, ideally UFO Drip lube, to re-lube your chain. See the CeramicSpeed instructions for the best way to maintain your chain.